

Ambient Water Quality Monitoring System

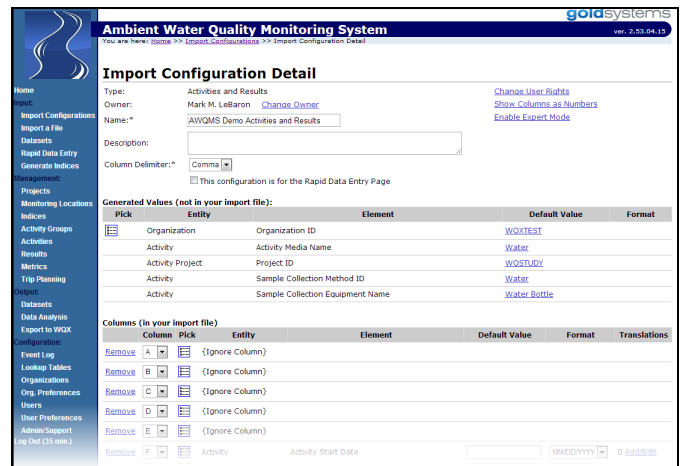


Consolidate ▪ Validate ▪ Analyze ▪ Assess ▪ Share

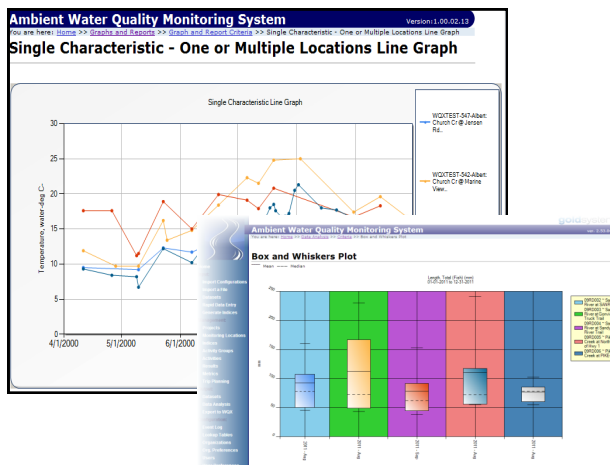
AWQMS is a comprehensive, web-based water quality data management system maintained by Gold Systems, developer of EPA's *Water Quality Exchange (WQX)*, and EPA's *WQX Web* data submission utility.

Data Input and QA/QC

- ◆ Import data from many file layouts
- ◆ Enter field data quickly using configurable Rapid Data Entry pages
- ◆ Make data corrections using detailed data management pages
- ◆ Verify data against WQX standards and resolve issues
- ◆ Validate results against user-provided thresholds and check for data consistency
- ◆ Search, sort, and filter your data
- ◆ Plan your trips; including locations, analytes, and bottles (requires additional configuration)



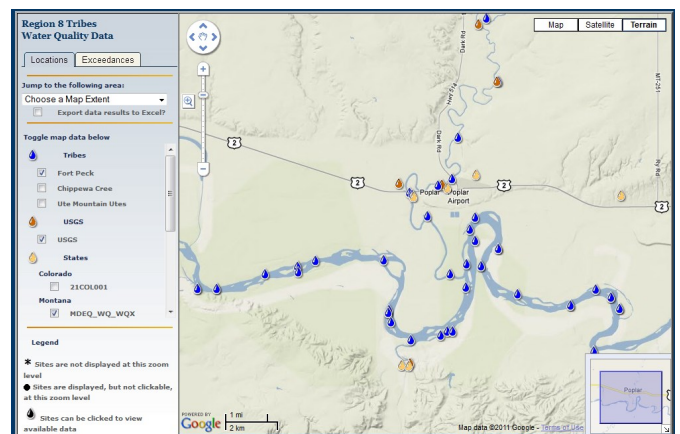
Data Analysis Reports, Graphs & Maps



- ◆ Graph your data:
 - Line, Bar, Combined Line & Bar, Box and Whiskers, Bi-Variate Scatter Plot w/Regression Line, Cumulative Frequency w/Histogram, Index Over Time, and more!
- ◆ Plot thresholds (standards/criteria) on graphs
- ◆ Generate statistical and exceedance reports
- ◆ Plot locations meeting certain criteria on a map
- ◆ Plot locations having exceedances on a map
- ◆ Perform analysis of variance (ANOVA) across locations
- ◆ Provide "portal" access to your public (optional)

Data Output

- ◆ Submit water quality data to the EPA WQX via the built-in node client or your own node (supports complete, partial, and incremental data submissions)
- ◆ Find and export data for additional assessment from locations where exceedances are occurring (supports association of locations, assessment units, designated uses, and use-thresholds for characteristics)
- ◆ Search for and export data ad-hoc in Microsoft® Excel and flat-file formats



Ambient Water Quality Monitoring System



AWQMS is being used by over 80 organizations consisting of federal, state, tribal, and volunteer water quality programs across EPA regions V, VI, VIII, IX, and X.

AWQMS can be hosted in the cloud, or deployed locally to work with existing enterprise systems.

Implementation

OPTION 1 – Hosted (in “the cloud”)

Gold Systems hosts AWQMS in a secure data center

- ◆ Monthly hosting fee covers hardware, database licenses, software licenses, database administration, and back-up
- ◆ You have 24/7 access to data, graphs, and reports with an internet connection and browser
- ◆ Updates and maintenance performed seamlessly on remote hosted servers
- ◆ Reliable, cost-effective, and easy

OPTION 2– Local Deployment

Deploy AWQMS on your own local servers and maintain the software locally

- ◆ AWQMS supports both SQL server and Oracle databases
- ◆ You provide hardware, licenses (database, operating system, web server), and IT staff
- ◆ Purchase of Annual Maintenance contract assures receipt of technical support and future AWQMS updates
- ◆ Allows for local integration with other systems

Support



Training, Support, and Customization

- ◆ Gold Systems facilitates the AWQMS Community
 - ◇ AWQMS Community portal with news, documentation, web-based tutorials and videos
 - ◇ Community email list server
 - ◇ Monthly community calls / training webinars
- ◆ Contact Gold Systems for estimates for the following custom services:
 - ◇ Data migration
 - ◇ Instructor-lead training (on-site or remote)
 - ◇ Remote user support and assistance
 - ◇ Development of additional features

Pricing

OPTION 1 – Hosted (in the “cloud”)

Number of Organizations (Single Contract)	Monthly Hosting Pricing	Pre-paid Annual Hosting Pricing (1/3 discount)
Individual Organization	\$300	\$2,400 (\$200 per month)
Group with 20 or Fewer Organizations	\$300 first org. / \$100 each additional	N/A
Group with more than 20 Organizations	Call for custom quote	N/A

OPTION 2– Local Deployment

Organization Type	Annual Maintenance Fee
State & Federal Agencies	\$12,000
Local / Tribal / Volunteer Program	\$6,000

