



## COLORADO WATER QUALITY MONITORING COUNCIL COLORADO DATA SHARING NETWORK

P.O. Box 2058 Ridgway, CO 81432 • 970-626-4045  
cwqmc@coloradowaterquality.org • www.ColoradoWaterData.org

CDSN 2014 Data Call - South Platte, Laramie, Republican & Smokey Hill River Basins | 2-2-2014

### Why would you use the Colorado Data Sharing Network (CDSN) to respond to a Data Call by the Colorado Water Quality Control Division (WQCD)?

- **Customized support and assistance.** First, the process of formatting your data is easier and you get support and assistance from CDSN staff.
- **Data available immediately and can be combined with others' data for exports, more robust analyses and for overall better water management decision making.** Your organization's data is stored with dozens of other Colorado data providers' data in a system that makes all of the stored data available immediately and in the future. You can search, filter, map, chart, and graph your own data in conjunction with other's data at the same time for use with monitoring and restoration planning, research and overall better water management decision making.
- **Using CDSN ensures the maximum use of all data uploaded at a minimum of cost.** Using CDSN spares your scarce resources for additional monitoring and/or analyses.
- **No need to double submit data for submission to WQCD for Data Calls or Reg85.** WQCD has determined that it is more efficient for WQCD to receive your data through CDSN.

### 2014 Colorado Data Sharing Network Call for Data in conjunction with the CDPHE WQCD South Platte River, Laramie River, Republican River and Smokey Hill River basins data call:

**SPECIAL NOTE: If you are already or going to be working with the Colorado Data Sharing Network (CDSN) on this data call for the South Platte River Basin as well as the data call for the monitoring requirement in Regulation No. 85, there is no reason to double submit your data and it is more efficient for the Division to receive your data through the CDSN. An added benefit of using CDSN is that your data will be available, along with all other participating entities' data, for other uses including CDSN mapping and analytical tools. If you are using the CDSN, please notify the Division by April 1<sup>st</sup>, 2014 that you are doing so. You will also need to begin working with CDSN as soon as possible, but no later than February 15, 2014.**

The Colorado Department of Health and Environment, Water Quality Control Division (CDPHE WQCD, aka "Division") has issued a request for data that could assist the Division in preparing for the triennial review of the South Platte River, Laramie River, Republican River and Smokey Hill River basins water quality classifications and standards review and recommendation process. According to the Division, the review of WQCC Regulation No. 38 Classifications and Numeric Standards for the South Platte River Basin, Laramie River Basin, Republican River Basin, Smokey Hill River Basin and subsequent rulemaking is currently as follows:

- |  |   |
|--|---|
| • Regulation No. 38 Issues Formulation Hearing     | November 10, 2014                       |
| • Regulation No. 38 Rulemaking Notice and Proposal | January 15, 2015* (date is approximate) |
| • Regulation No. 38 Rulemaking Hearing             | June 8 - 10, 2015                       |

This effort requires the compilation of recent water quality parameters including biological, physical, chemical, and other related data collected throughout the referenced basins. This compilation of data from streams, lakes, and

reservoirs will be the basis of the Division's recommendations to the Water Quality Control Commission for maintaining or modifying water quality classifications and standards in these river basins.

Although the Division has conducted sampling events, there are data gaps. Therefore, the Division is requesting water quality data from any sampling events conducted in these basins during the last **ten** years to assist in determining ambient water quality across the state during this time period. Please refer to the Divisions January 31, 2014 document: [Request for Water Quality Data for the South Platte River Basin Triennial Review](#) for additional details including a list of parameters of special interest by the Division.

To be accepted by the Division, data must be submitted with required metadata in electronic format and must be received by the appropriate person at the Division by **April 15, 2014**, as data received after this date will not be reviewed and incorporated into the Division's proposals for Regulation No. 38 rulemaking hearings in 2015. All information collected by the Division will be available for public review and use after the Division's Pre-Hearing Statements are submitted.

The Division is also working with the Colorado Data Sharing Network (CDSN) on this data call for the South Platte River Basin as well as the data call for the monitoring requirement in Regulation No. 85. If you are working with CDSN on the management of your data, or would like to start using CDSN, please submit your data through them by going to [http://www.coloradowaterdata.org/datacalls\\_cdsn.html](http://www.coloradowaterdata.org/datacalls_cdsn.html). There is no reason to double submit your data and it is more efficient for the Division to receive your data through the CDSN. An added benefit of using CDSN is that your data will be available, along with all other participating entities' data, for other uses including CDSN mapping and analytical tools. **If you are using the CDSN, please notify the Division by April 1<sup>st</sup>, 2014 that you are doing so. You will also need to begin working with CDSN as soon as possible, but no later than February 15, 2014.**

**If your data is already stored in the CDSN data management system**, known as "AWQMS", then when you contact CDSN, you will specifically direct the CDSN Project Coordinator to include the data you desire to be submitted to the Division, especially if you desire just a certain subset of your data to be submitted. CDSN will ensure your data is in the proper format and is submitted to the Division electronically on your behalf. **All data must be uploaded into the CDSN system by April 1st, 2014.**

**If your data is not already uploaded and stored in the CDSN system**, you should contact the Project Coordinators right away so they can begin getting you set-up in the system. Either way, you need to contact CDSN as soon as possible, but no later than February 15, 2014 to ensure that CDSN Project Coordinators will know you are participating in this data call and can advise you of next steps. **All data must be uploaded into the CDSN system by April 1st, 2014.**

The Colorado Data Sharing Network (CDSN) does accommodate uploads of macroinvertebrate ("bug") data. **If you have been collecting macroinvertebrate data in addition to water quality data please contact both the CDSN and Aimee Konowal at the Division as soon as possible.**

**Any entity collecting water quality or environmental data in Colorado is welcome to join the Colorado Data Sharing Network and begin uploading their data into AWQMS.** Please contact Project Coordinator Lynn Padgett at 970-626-4045 (office), 970-258-0836 (cell) or [cwqmc@coloradowaterquality.org](mailto:cwqmc@coloradowaterquality.org) (email) right away to learn more details about uploading data into CDSN AWQMS and to learn about the benefits of being part of the Colorado Data Sharing Network. **New data organizations within the South Platte River, Laramie River, Republican River and Smokey Hill River basins will be given priority for assistance and training to meet the April deadline on a first-come, first-served basis.**

CDSN is also issuing a Data Call for all basins at this time to upload any new data into AWQMS by April 1, 2014. To ensure that CDSN data is compatible with WQCD data calls and other uses, we have recently updated our Minimum Data Elements for Projects, Monitoring Locations, and Activities/Results to ensure that if you upload your data into CDSN AWQMS it will automatically meet the criteria and guidelines required by WQCD for several programs, such as Reg85, Non-Point Source, and Division Data Calls. It is essential that the **HUC 8 code** be uploaded with all Monitoring Location (Station) metadata. The CDSN Minimum Data elements fact sheet and our Physical/Chemical data upload template were revised in late December 2013 to ensure full compatibility with Division requirements. These documents are available on our [AWQMS web page](#).

AWQMS allows for querying/selecting monitoring locations and exporting data by HUC 8 code, a feature designed by CDSN. In 2013 CDSN enhanced our Exceedance mapper (aka "Google Mapper"), which allows for **LIVE (!)** filtering of CDSN data on a Google-mapper by characteristic and exceedance threshold. To learn more go to our [Exceedance Mapper web page](#) and be sure to download the **Exceedance Mapper Quick Start Guide**.

Also, in 2013 CDSN designed and deployed a new on-line GIS application that also can be used in your own ESRI desktop GIS environment. GIS "shapefiles" are available for download and will be updated each summer. To learn more, go to our [CDSN Web GIS application web page](#) and again, be sure to download the GIS Quick Start Guide.

## Helpful Links:

### Colorado Department of Public Health & Environment, Water Quality Control Division:

- [CDPHE WQCD Request for Water Quality Data for the South Platte River Basin Triennial Review](#)
- [WQCD Web Portal](#)

### Colorado Data Sharing Network (CDSN is a project of the Colorado Water Quality Monitoring Council)

#### - Data Call resources :

- [CDSN web site Home page](#)
- [CDSN Data Call Info web page](#)
- [CDSN AWQMS \(data management system\) web page](#)
  - [CDSN Minimum Data Elements fact sheet](#)

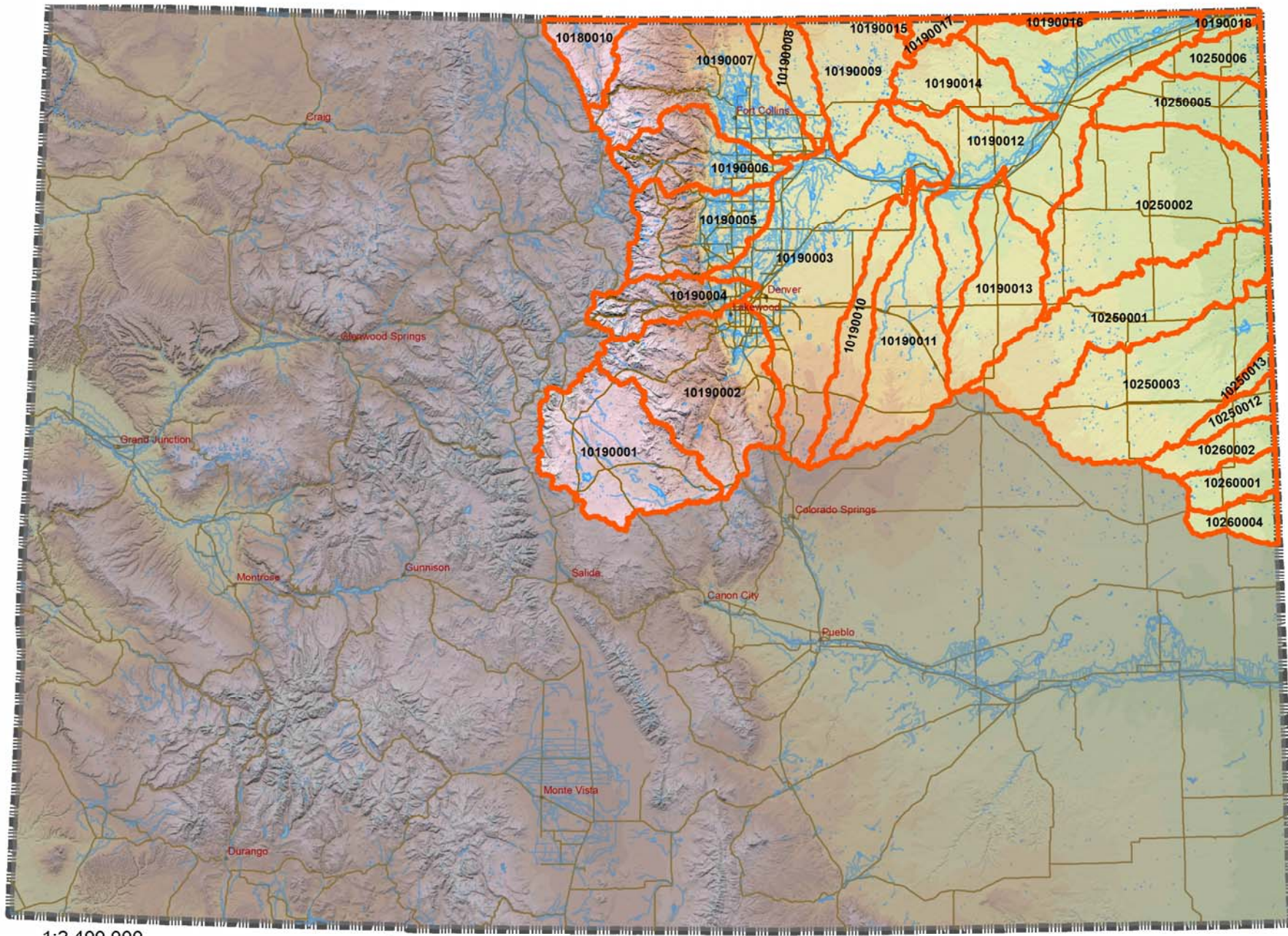
Thank you for your data contributions and support for the Colorado Data Sharing Network. CDSN appreciates the opportunity to work closely with our partners and with CDPHE and WQCD.

Sincerely,



Lynn Padgett, CDSN Project Coordinator  
970-626-4045 | [cwqmc@coloradowaterquality.org](mailto:cwqmc@coloradowaterquality.org)

Learn, Query, and Demo CDSN AWQMS at [www.ColoradoWaterData.org](http://www.ColoradoWaterData.org)



1:2,400,000



**Legend**

- HUC 8 Basins in 2014 Data Call
- Not part of WQCD 2014 Data Call
- City/Town (for orientation)
- Major Waterway
- Major Waterbody
- CDOT Highway
- Colorado State Boundary